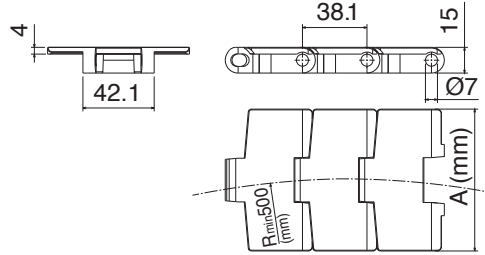




Max Performance
Magnetic System

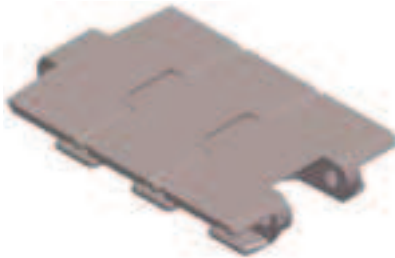


880 M catena curvilinea / Sideflexing chain / kurvengängige Scharnierbandkette

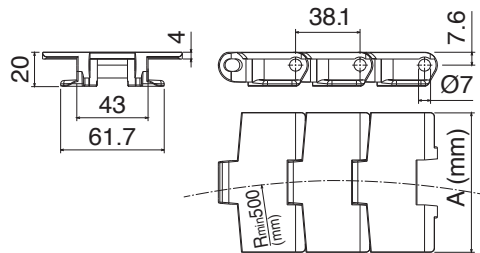
Part	Article-Nr.	Ref.	A	Weight Kg/m
1110	11100102	880 M K325	82,5	1,05
1110	11100103	880 M K330	83,8	1,09
1110	11100105	880 M K450	114,3	1,15
1110	11100107	880 M K750	190,5	1,52

	Material	Breaking load
01	LF Standard Material Acetal Resin	5800 N
03	MX Available also in Max Performance	5200 N
08	MK	5500 N

Pins: Ferritic Stainless Steel



Tab System



880 TAB catena curvilinea / Sideflexing chain / kurvengängige Scharnierbandkette

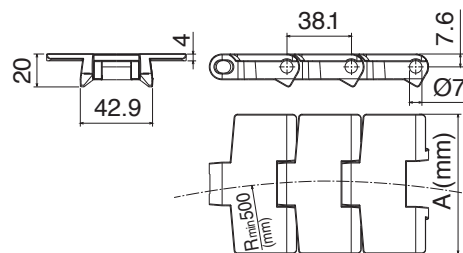
Part	Article-Nr.	Ref.	A	Weight Kg/m
1111	11110102	880 TAB K325	82,5	1,015
1111	11110103	880 TAB K330	83,8	1,018
1111	11110105	880 TAB K450	114,3	1,09
1111	11110106	880 TAB K600	152,4	1,35

	Material	Breaking load
01	LF Standard Material Acetal Resin	6000 N
03	MX Available also in Max Performance	5000 N
08	MK	5700 N

Pins: Austenitic Steel



Bevel System



880 B catena curvilinea / Sideflexing chain / kurvengängige Scharnierbandkette

Part	Article-Nr.	Ref.	A	Weight Kg/m
1112	11120102	880 B K325	82,5	0,89
1112	11120103	880 B K330	83,8	0,91
1112	11120105	880 B K450	114,3	1,05

	Material	Breaking load
01	LF Standard Material Acetal Resin	6000 N
03	MX Available also in Max Performance	5000 N
08	MK	5700 N

Pins: Austenitic Steel

