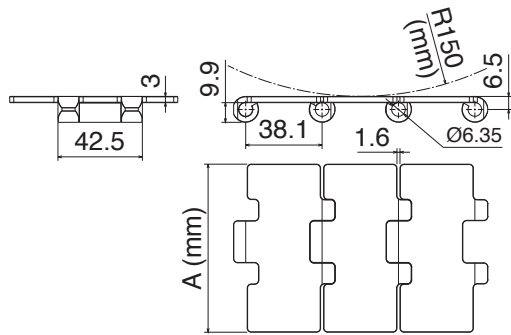




## 812/815 catena rettilinea / straight running chain / geradegängige Scharnierbandkette



Part	Article-Nr.	Ref.	A	Weight kg/m	Max working load
1001	10010202	SS 812 K325	82,5	2,55	5500 N
1001	10010203	SS 812 K330	83,8	2,59	
1001	10010204	SS 812 K350	88,9	2,69	
1001	10010205	SS 812 K450	114,3	3,25	
1001	10010206	SS 812 K600	152,4	4,15	
1001	10010207	SS 812 K750	190,5	5,05	

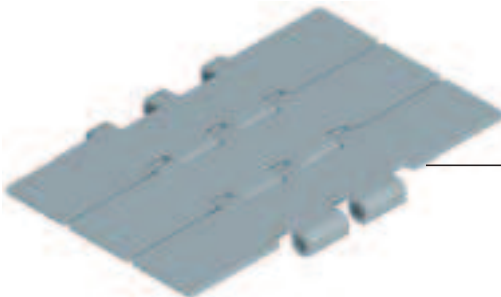
1001	10010102	SSE 815 K325	82,5	2,55	6000 N
1001	10010103	SSE 815 K330	83,8	2,59	
1001	10010104	SSE 815 K350	88,9	2,69	
1001	10010105	SSE 815 K450	114,3	3,25	
1001	10010106	SSE 815 K600	152,4	4,15	
1001	10010107	SSE 815 K750	190,5	5,05	

1001	10010302	SSM 815 K325	82,5	2,55	6000 N
1001	10010303	SSM 815 K330	83,8	2,59	

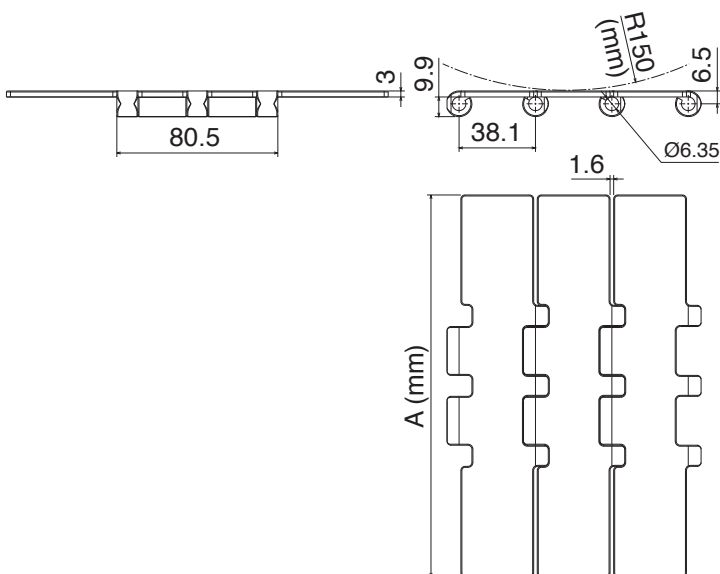
### Material

- 01 **SSE** Super-hard stainless steel
- 02 **SS** Standard stainless steel
- 03 **MX**  Max Speed

Pins: Austenitic Steel



## 802 catena rettilinea / straight running chain / geradegängige Scharnierbandkette



Part	Article-Nr.	Ref.	A	Weight kg/m	Max working load
1003	10030207	SS 802 K750	190,5	5,80	7000 N
1003	10030107	SSE 805 K750	190,5	5,80	9000 N

### Material

- 01 **SSE** Super-hard stainless steel
- 02 **SS** Standard stainless steel

Pins: Austenitic Steel

